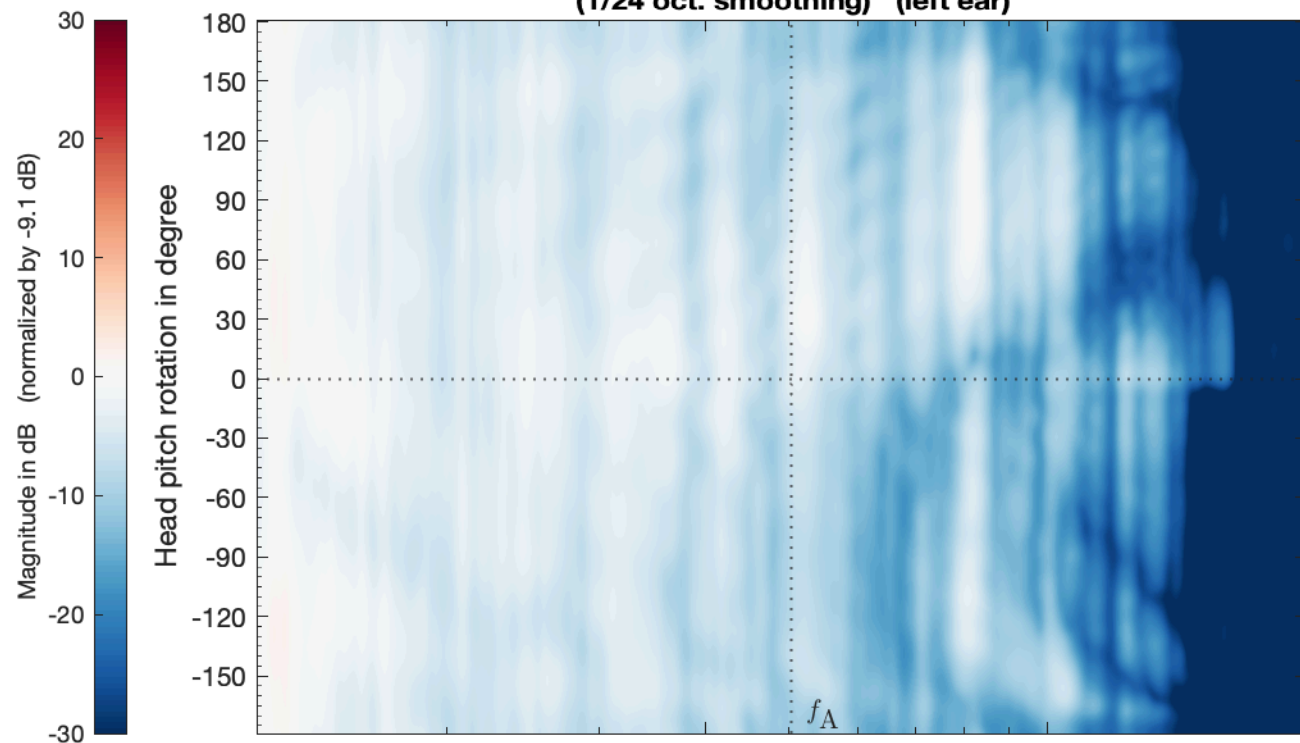
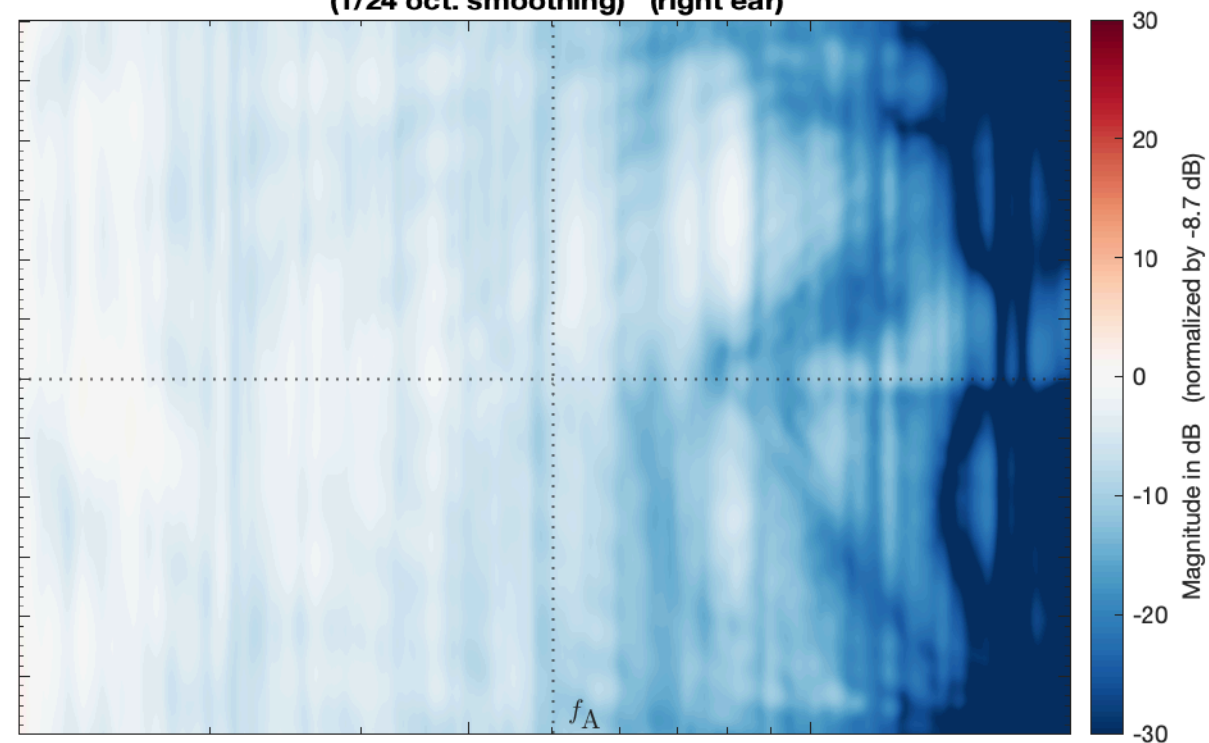


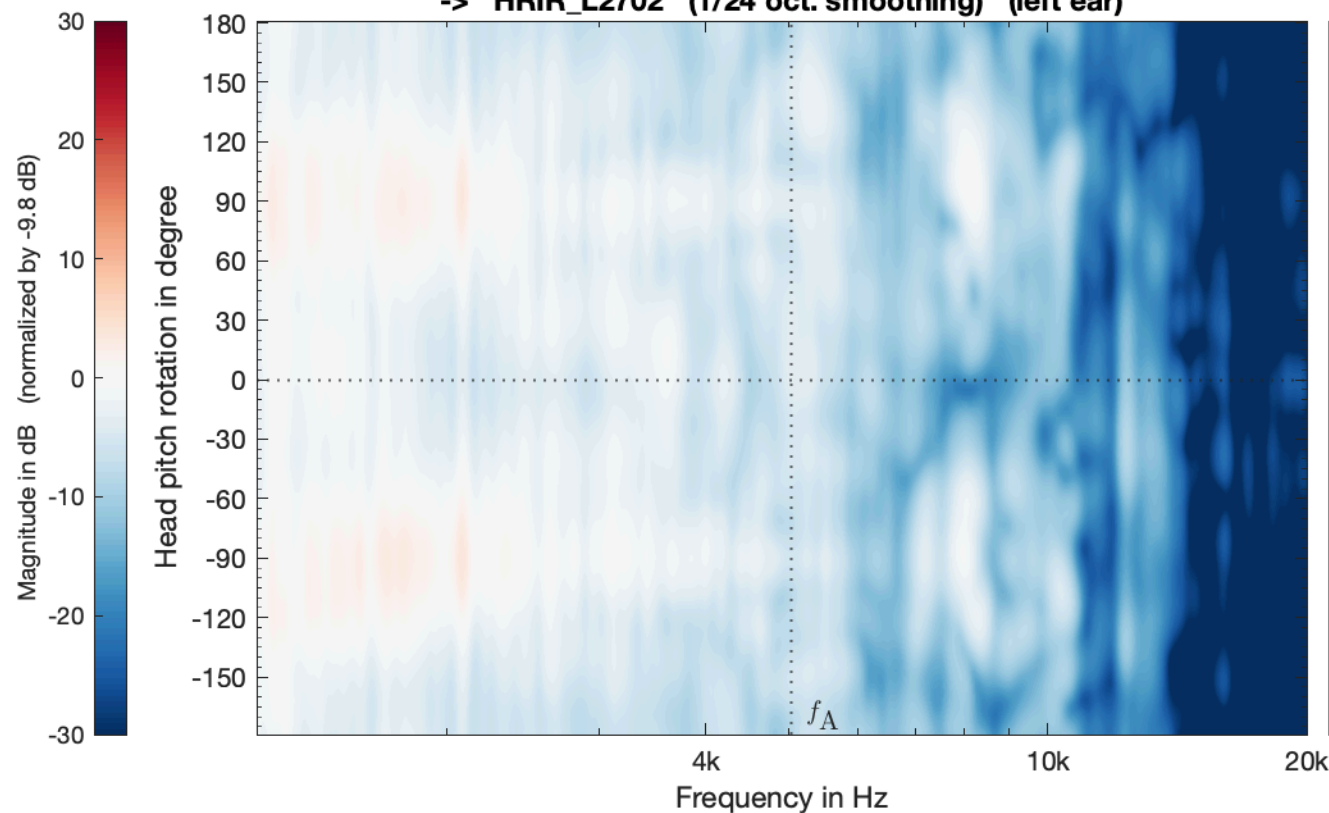
**LBS\_VSA\_1202RS\_PAC\_struct\_vertical\_SSR**  
**(1/24 oct. smoothing) (left ear)**



**LBS\_VSA\_1202RS\_PAC\_struct\_vertical\_SSR**  
**(1/24 oct. smoothing) (right ear)**



**LBS\_VSA\_EMA17\_PAC\_struct\_SubSampled\_SH29\_eMagLS\_vertical**  
**-> HRIR\_L2702 (1/24 oct. smoothing) (left ear)**



**LBS\_VSA\_EMA17\_PAC\_struct\_SubSampled\_SH29\_eMagLS\_vertical**  
**-> HRIR\_L2702 (1/24 oct. smoothing) (right ear)**

