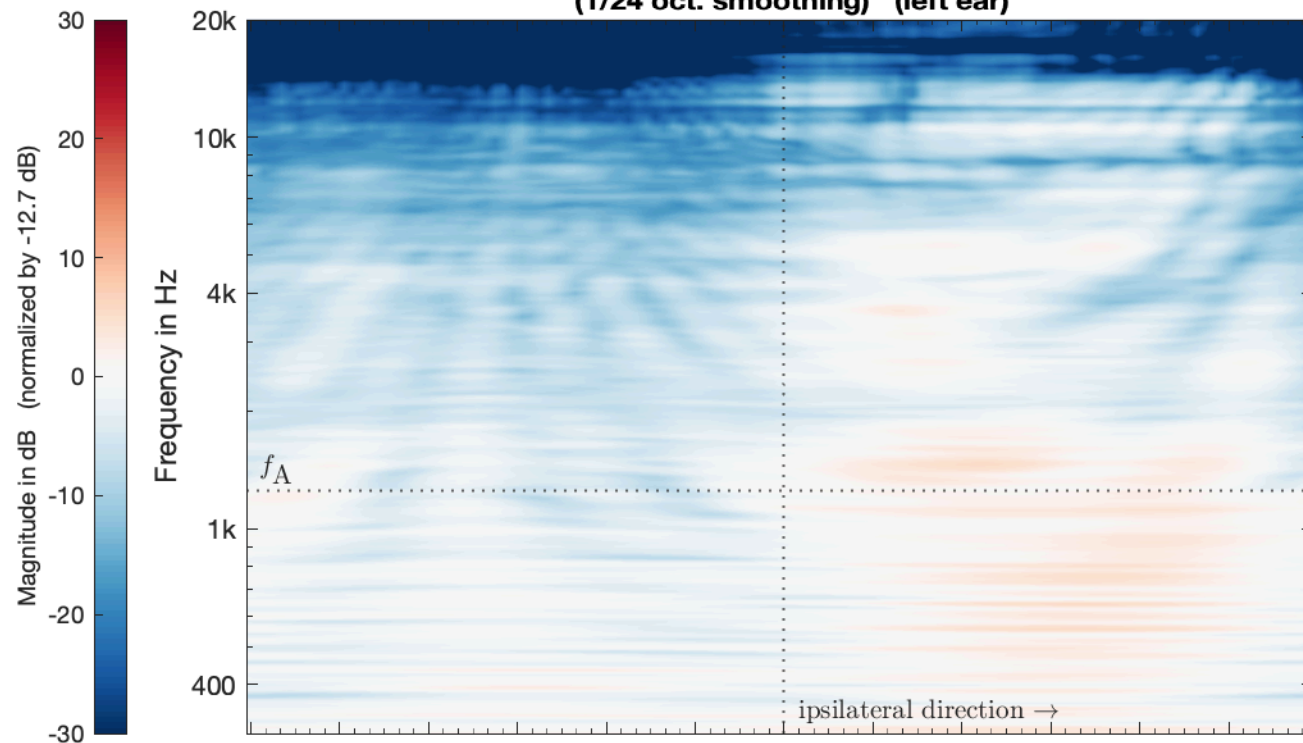
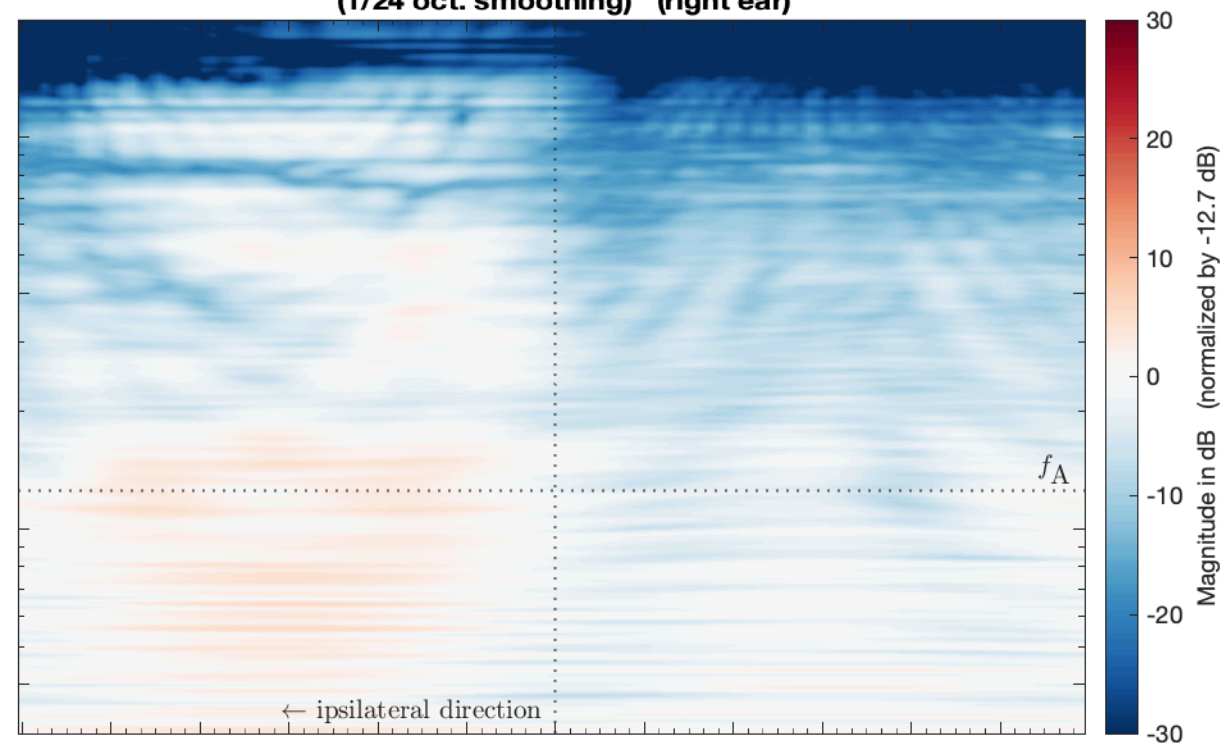


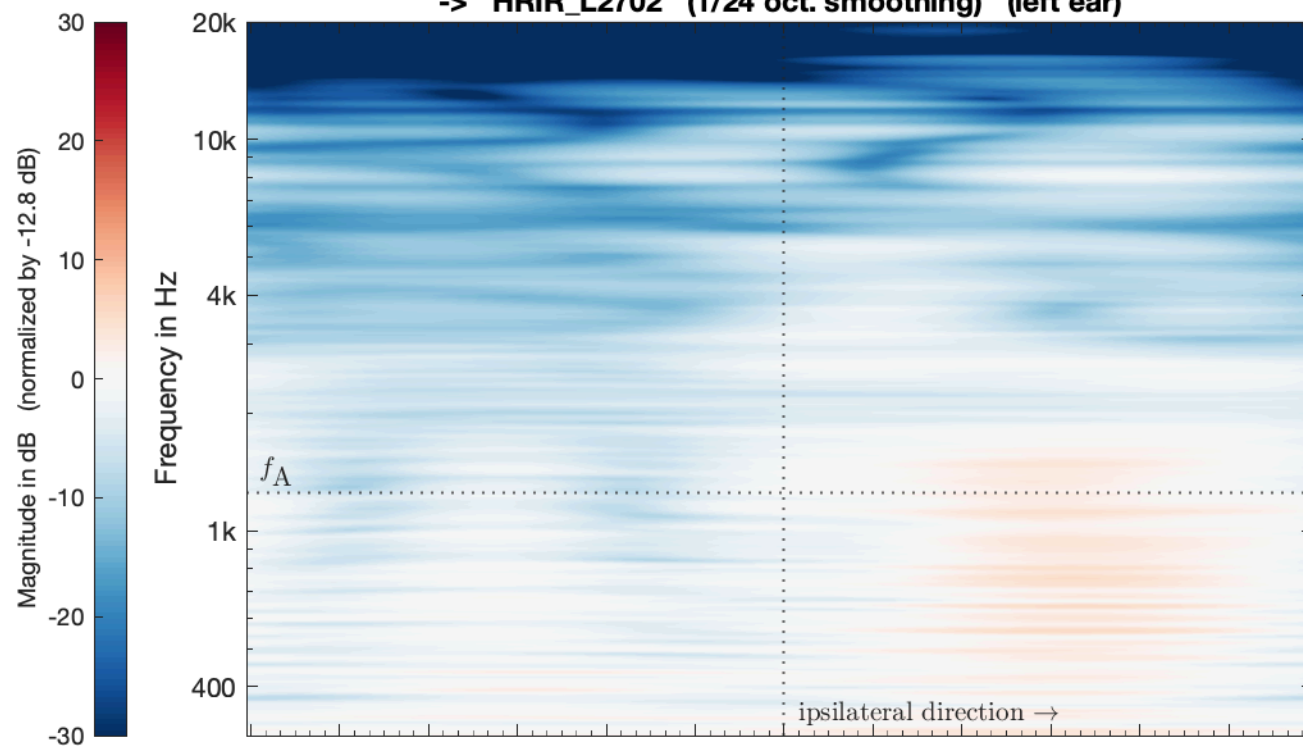
LBS_VSA_1202RS_PAC_struct_SSR
(1/24 oct. smoothing) (left ear)



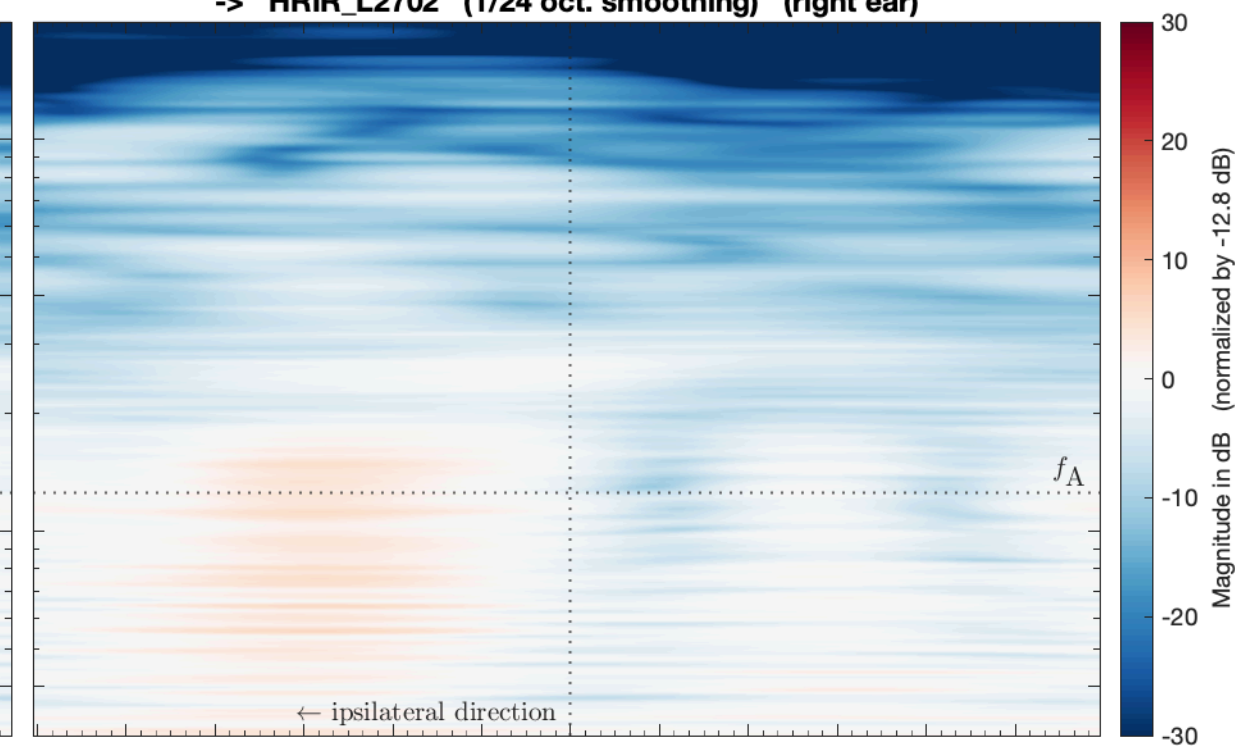
LBS_VSA_1202RS_PAC_struct_SSR
(1/24 oct. smoothing) (right ear)



LBS_VSA_SMA_TD14_PAC_struct_SubSampled_SH29_eMagLS
-> HRIR_L2702 (1/24 oct. smoothing) (left ear)



LBS_VSA_SMA_TD14_PAC_struct_SubSampled_SH29_eMagLS
-> HRIR_L2702 (1/24 oct. smoothing) (right ear)



Head yaw rotation in degree

Head yaw rotation in degree

